

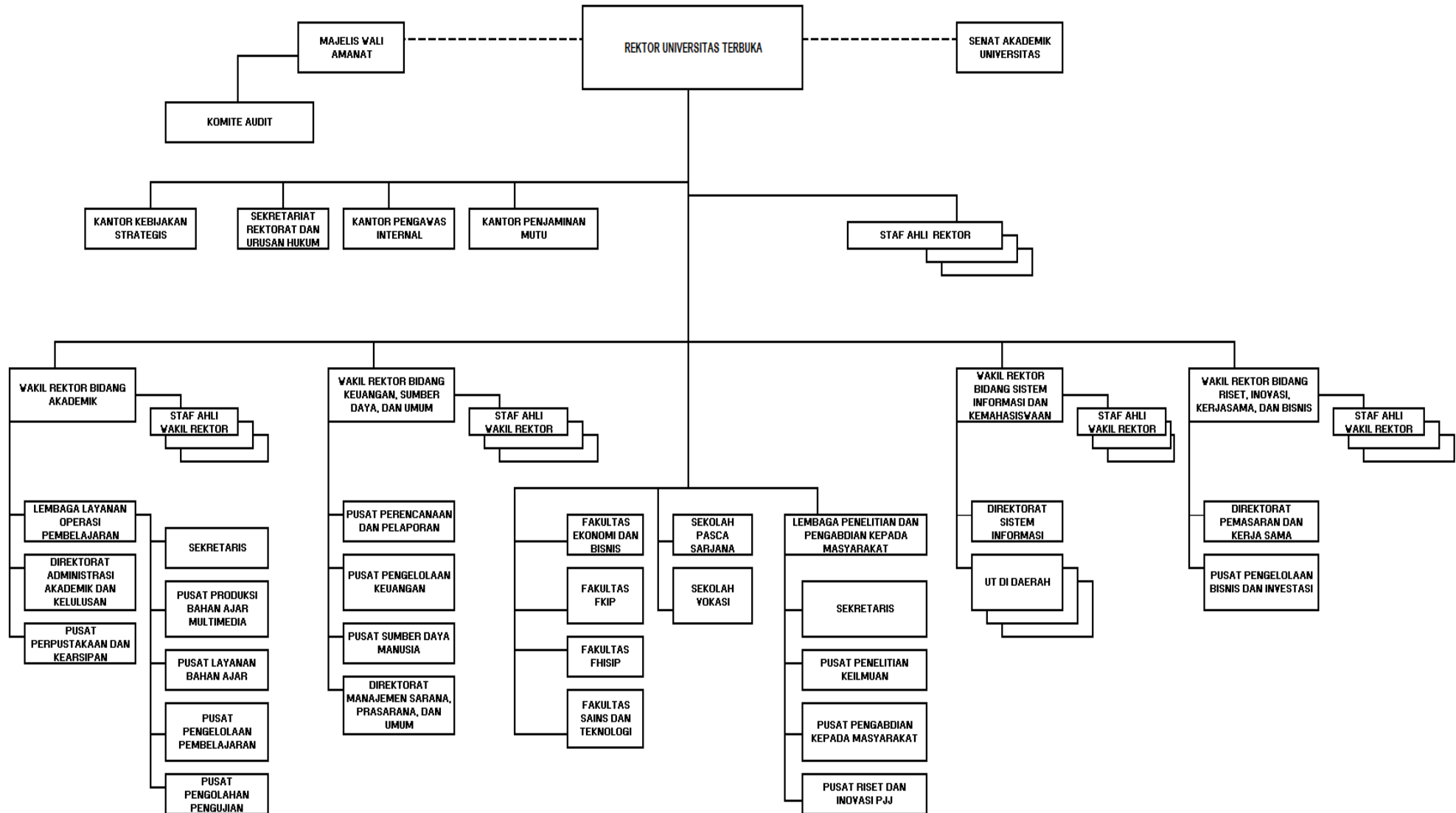


UNIVERSITAS TERBUKA

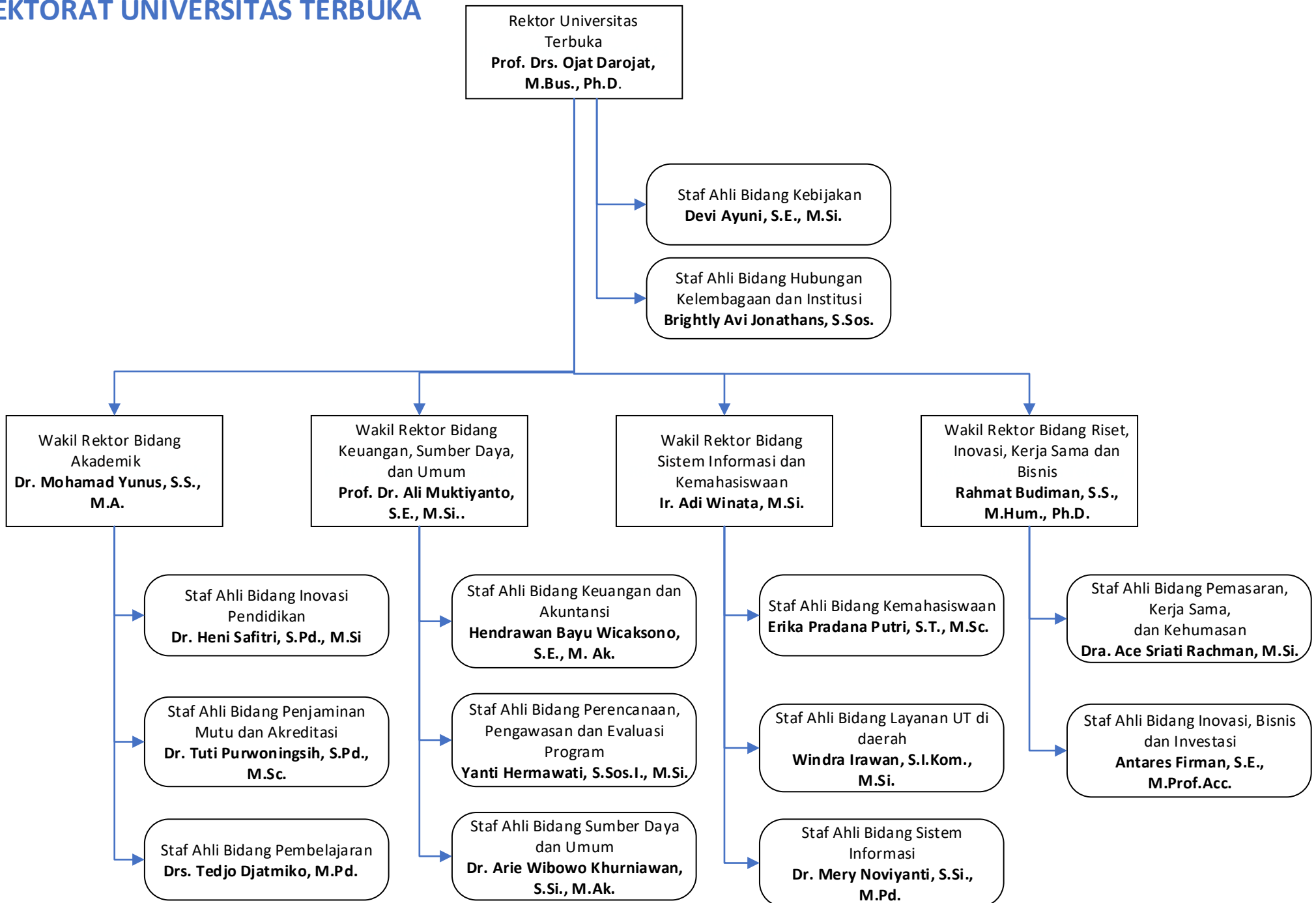
**STRUKTUR ORGANISASI DAN PEJABAT KANTOR PUSAT
UNIVERSITAS TERBUKA**

(PELANTIKAN 8 MEI 2023)

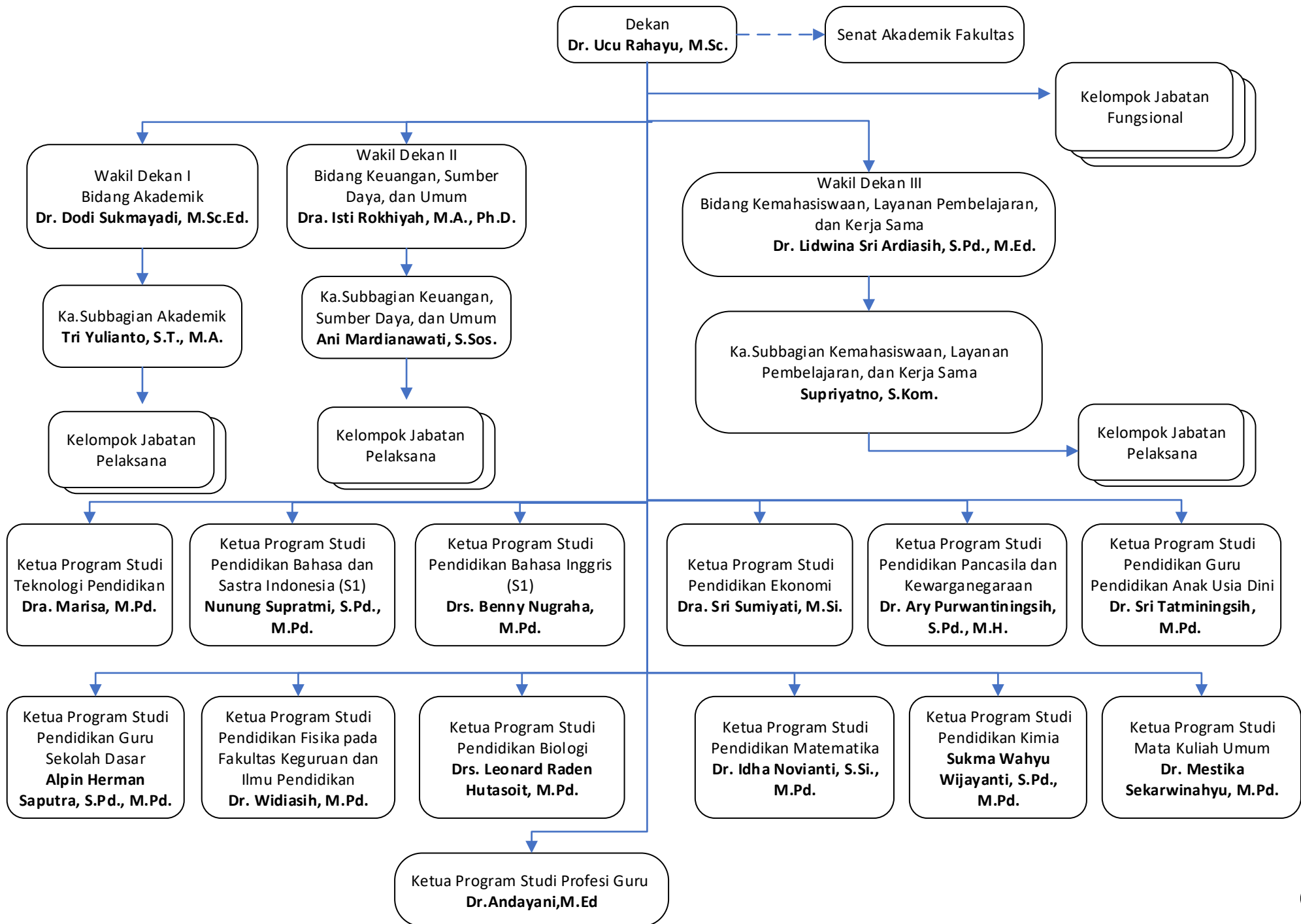
STRUKTUR ORGANISASI UNIVERSITAS TERBUKA PTNBH



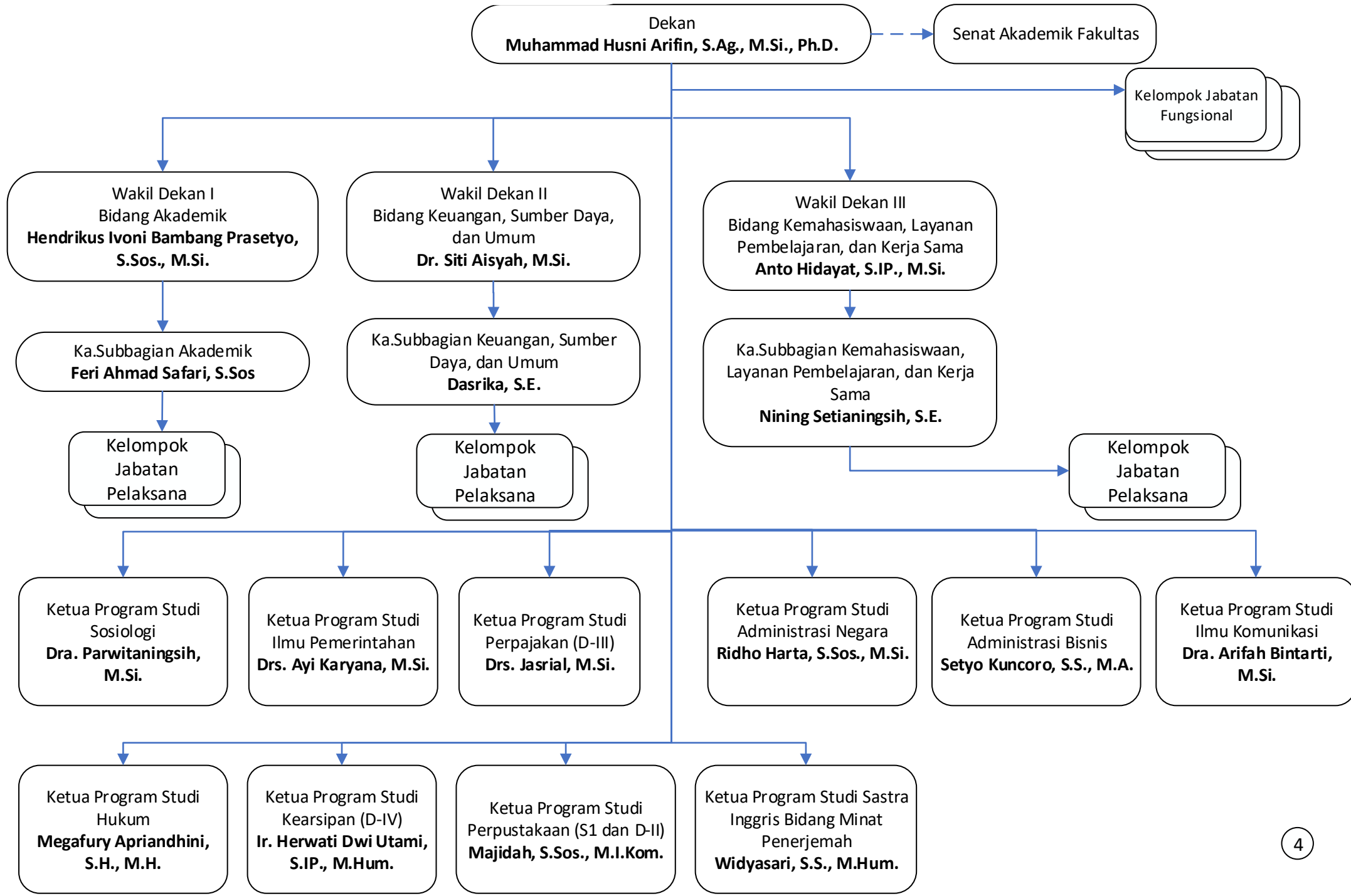
REKTORAT UNIVERSITAS TERBUKA



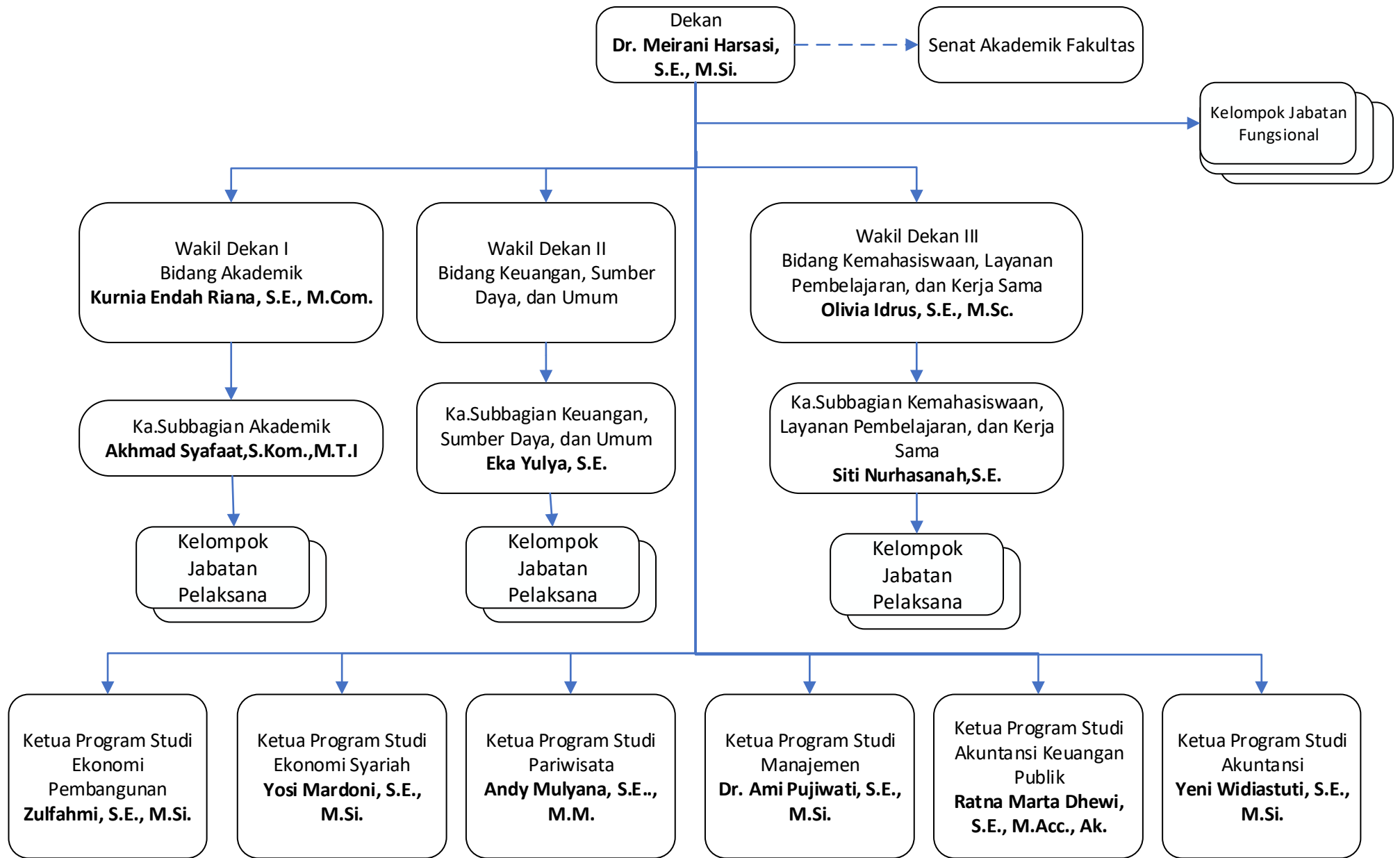
FAKULTAS KEGURUAN DAN ILMU PENDIDIKAN (FKIP)



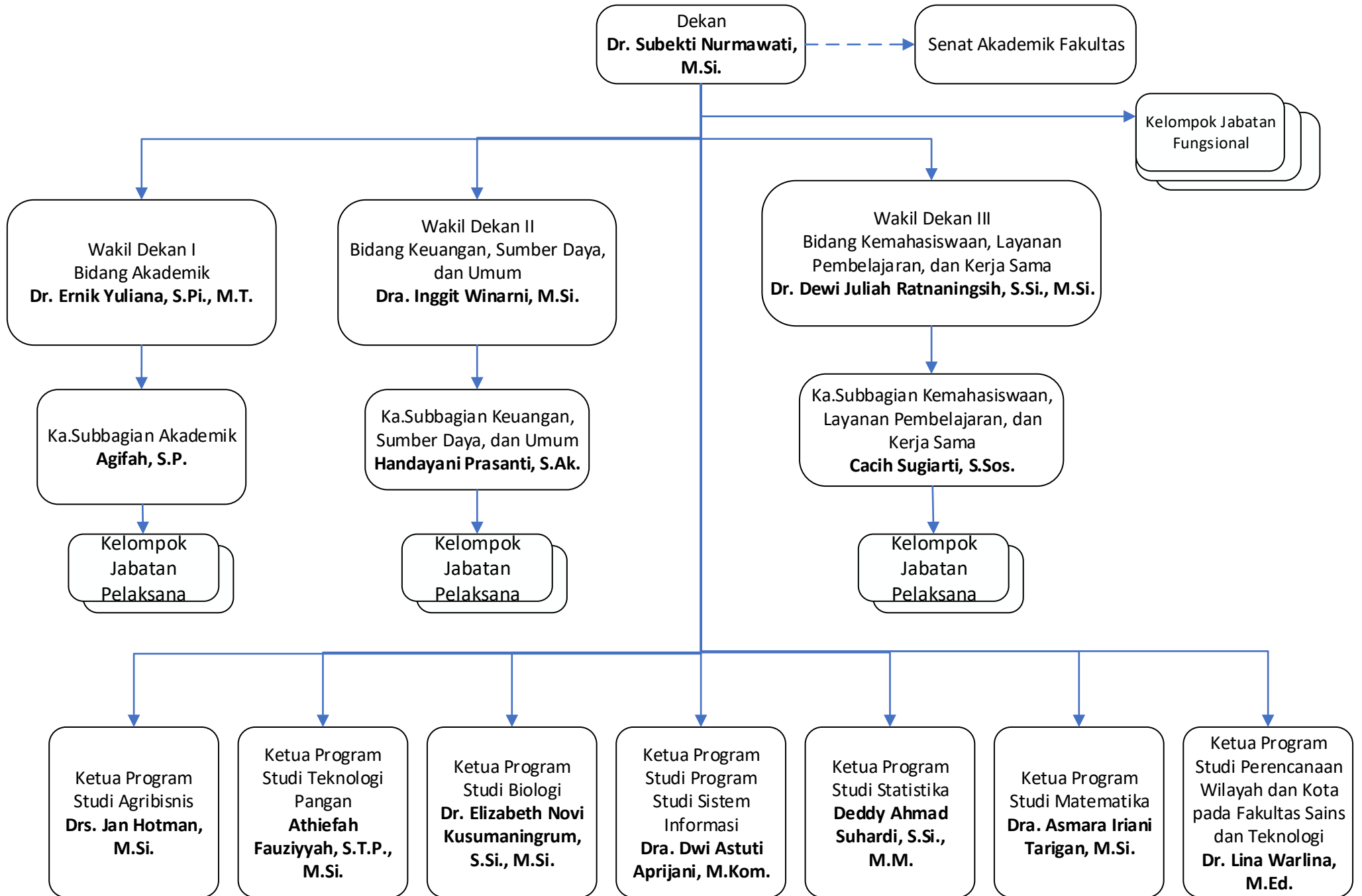
FAKULTAS ILMU HUKUM DAN ILMU POLITIK (FHISIP)



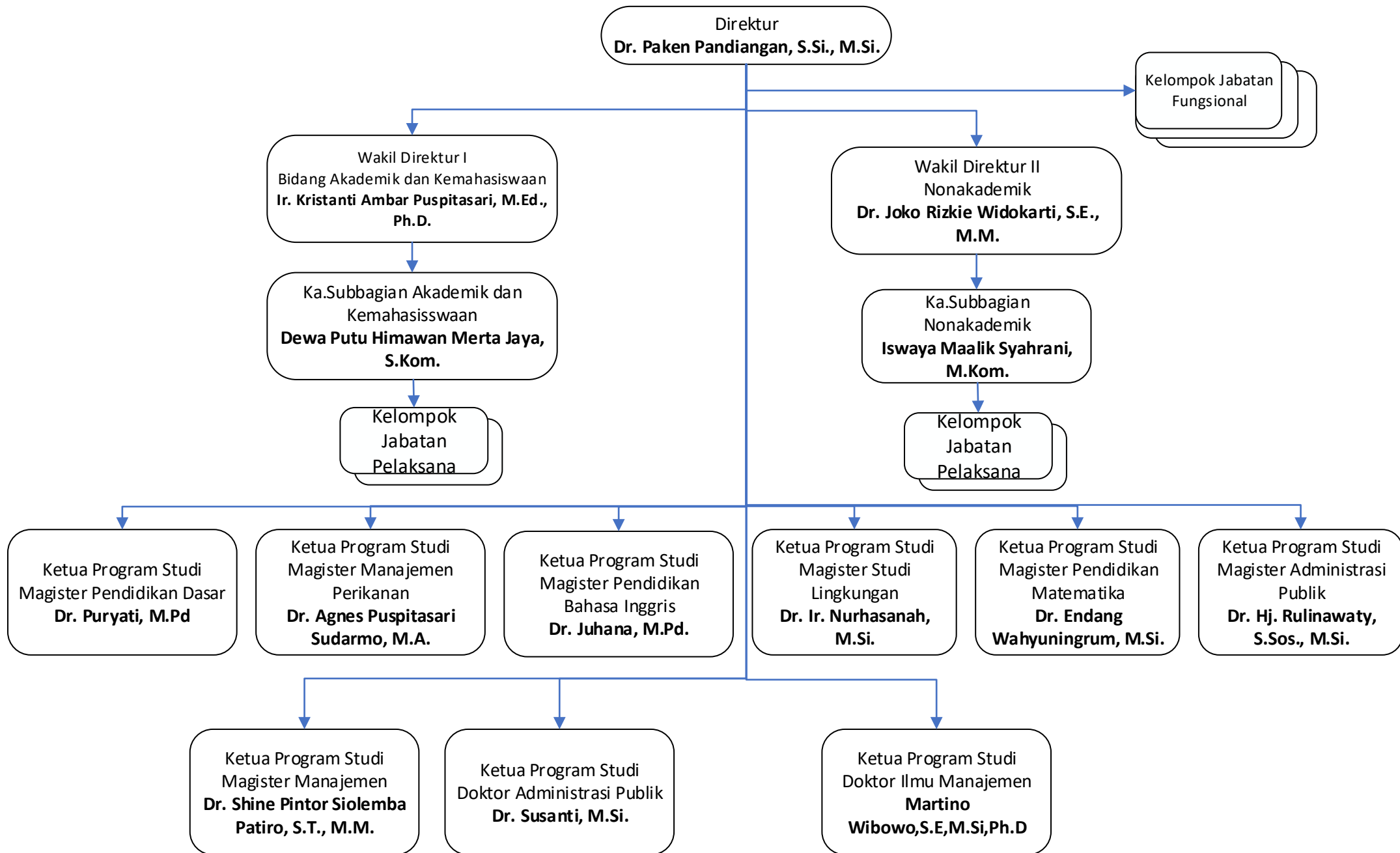
FAKULTAS EKONOMI DAN BISNIS (FEB)



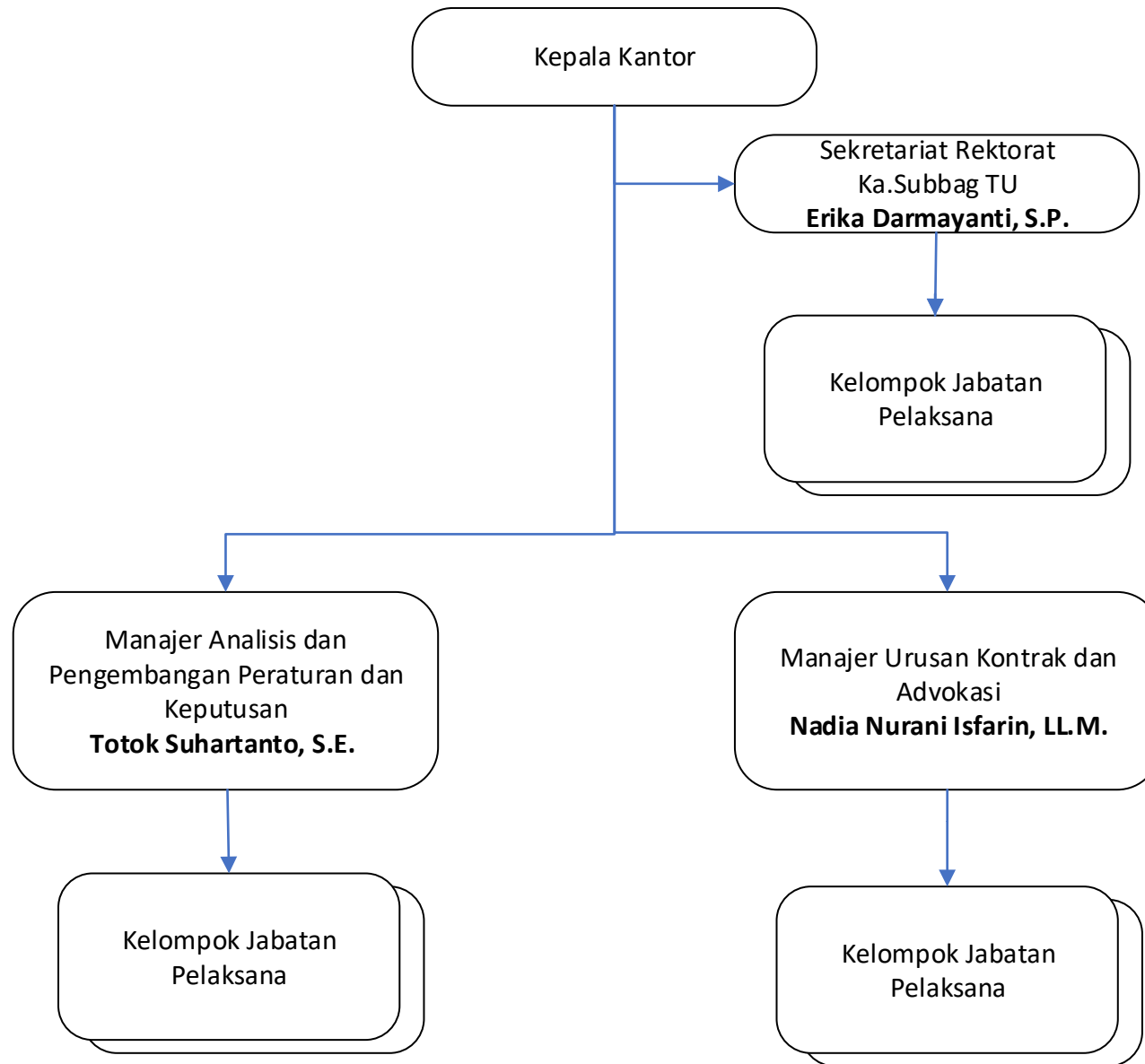
FAKULTAS SAINS DAN TEKNOLOGI (FST)



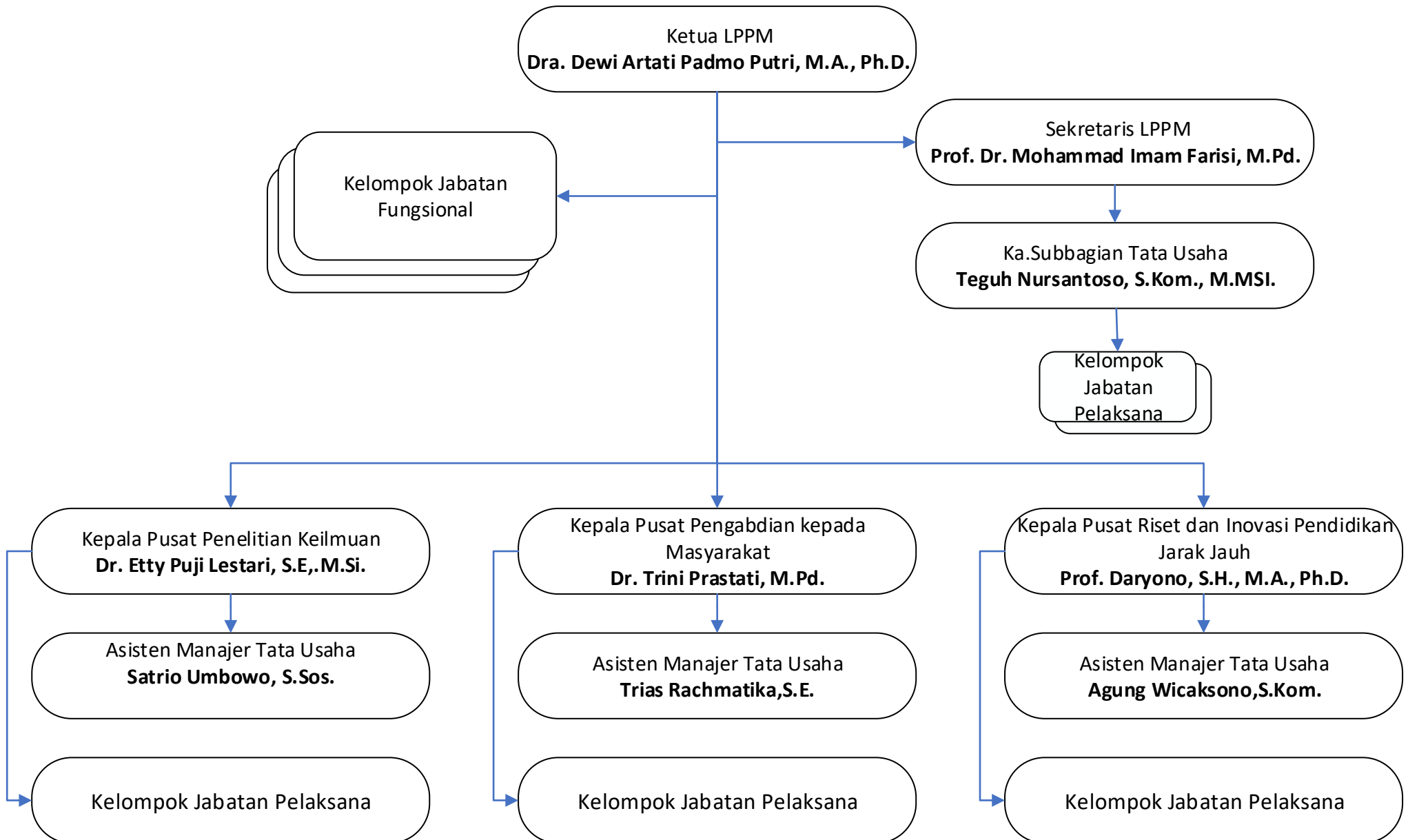
SEKOLAH PASCASARJANA (SPs)



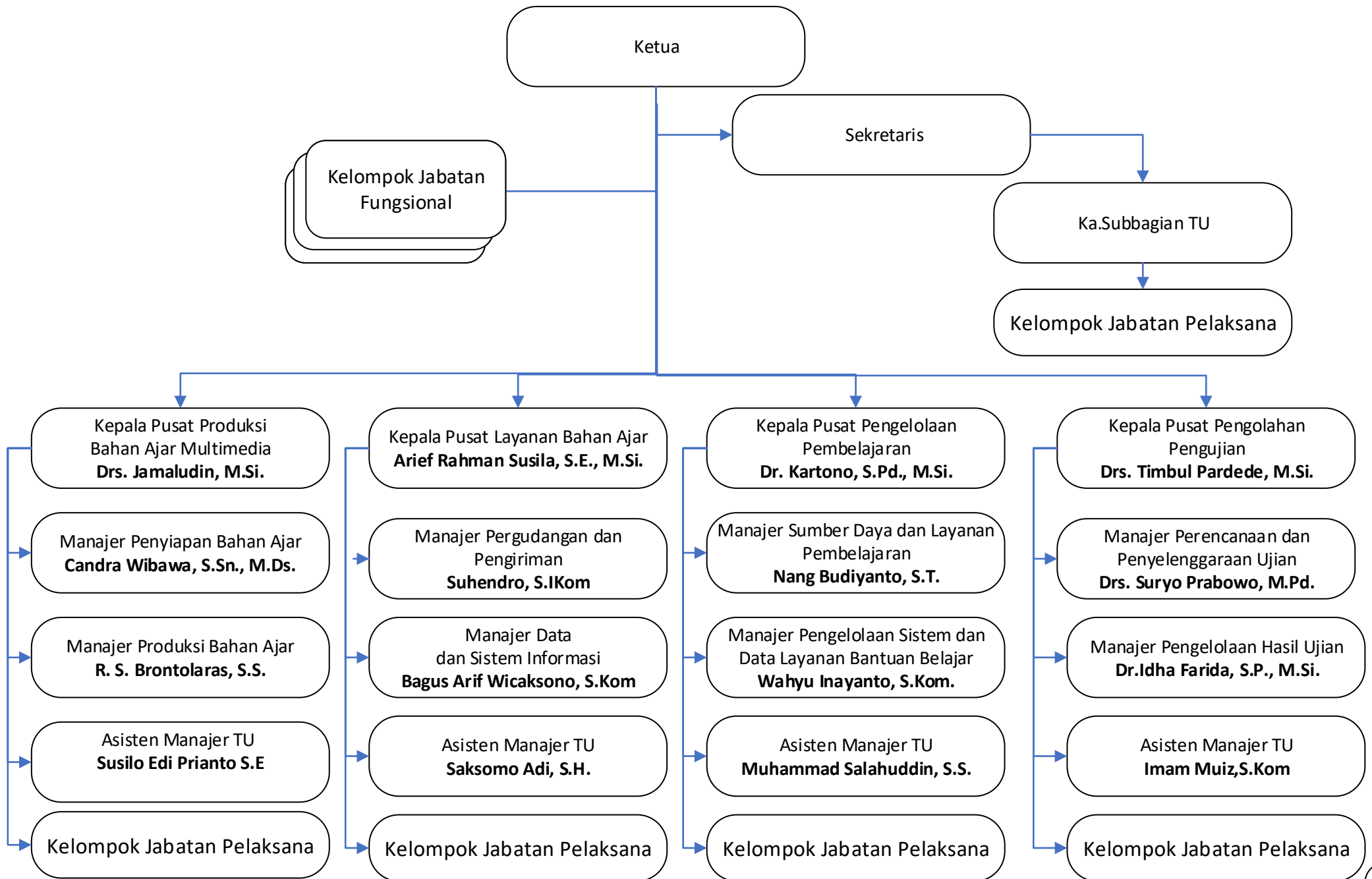
SERKETARIAT REKTORAT DAN URUSAN HUKUM (SRUH)



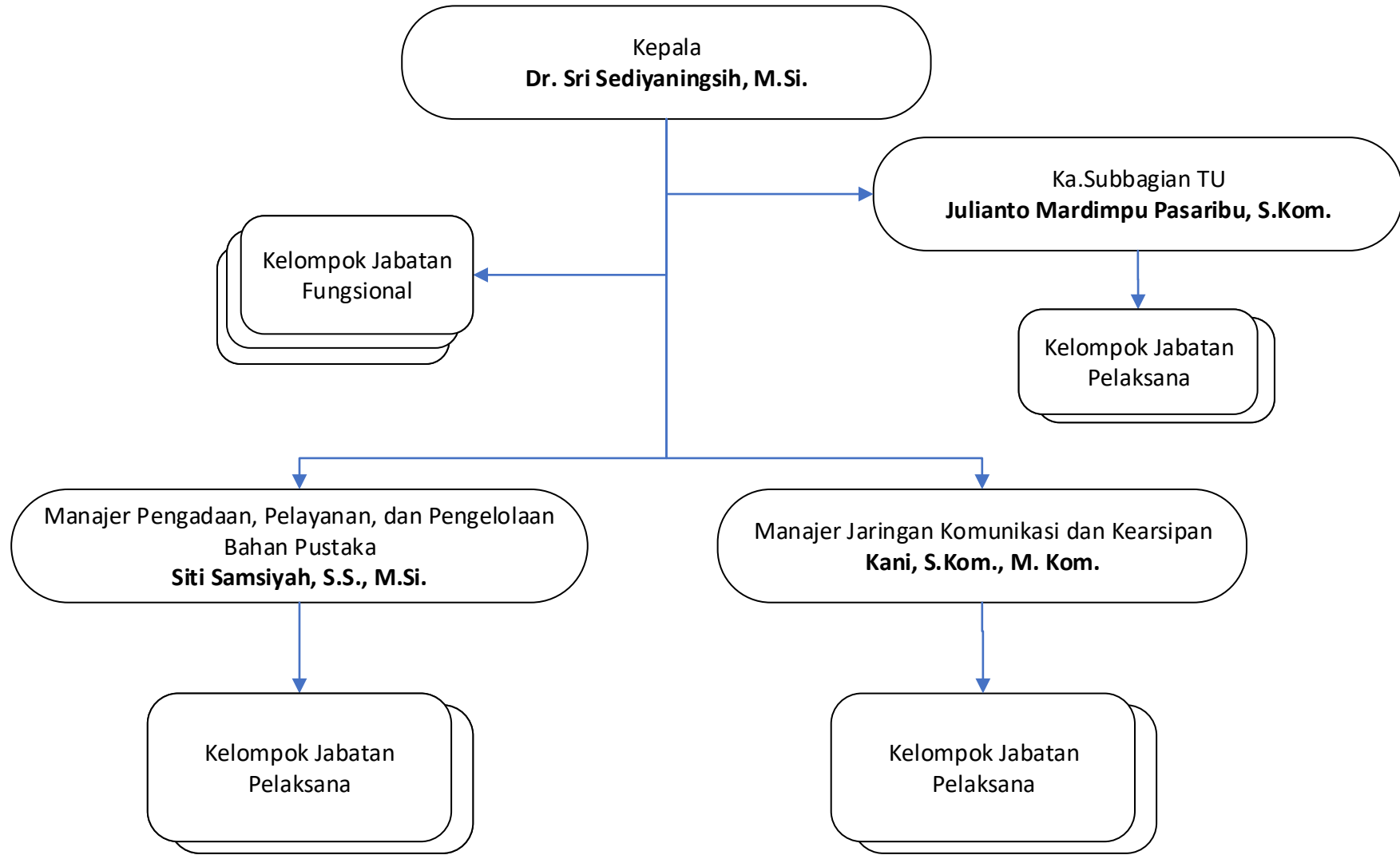
LEMBAGA PENELITIAN DAN PENGABDIAN KEPADA MASYARAKAT (LPPM)



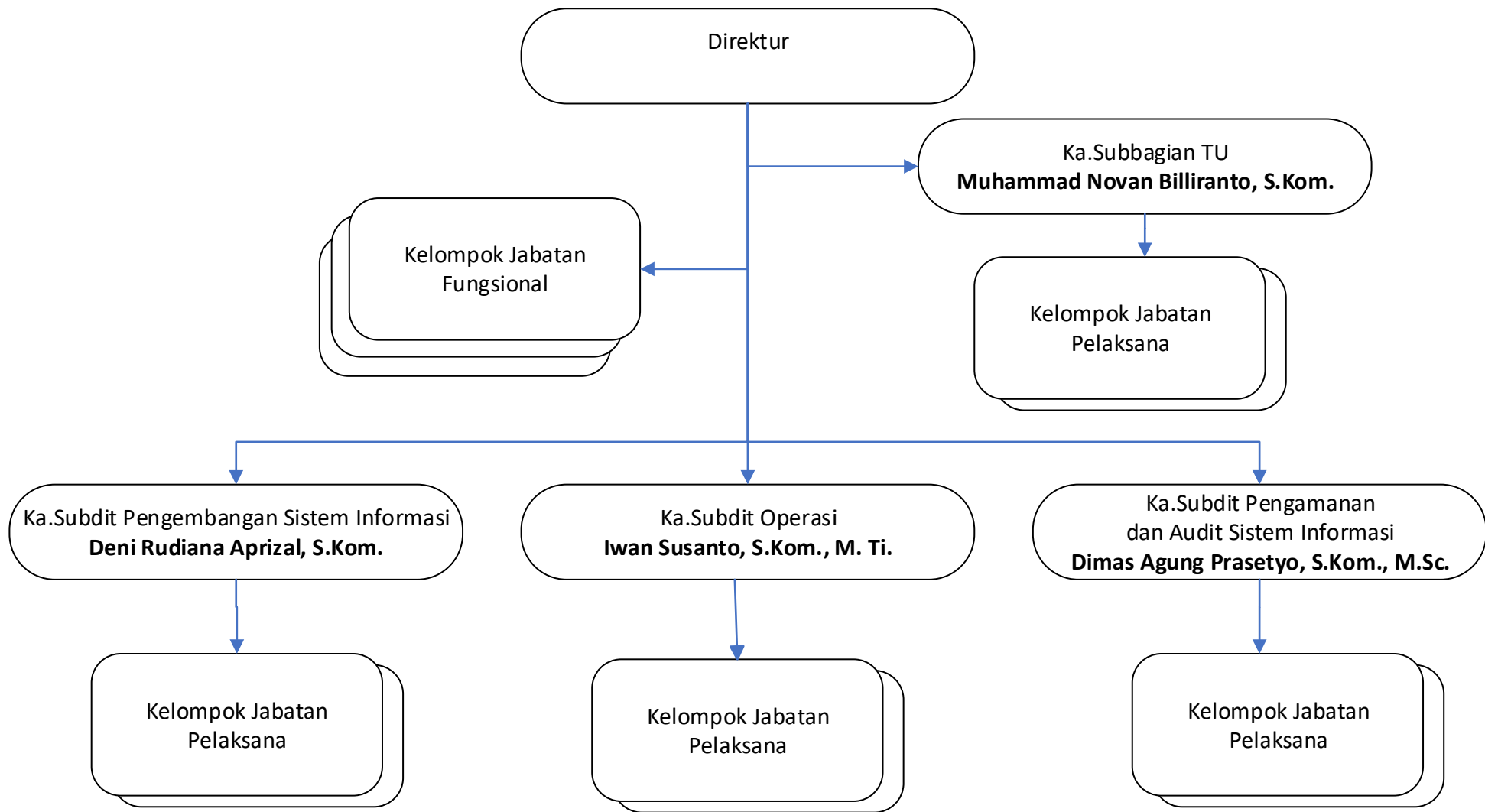
LEMBAGA LAYANAN OPERASIONAL PEMBELAJARAN (LLOP)



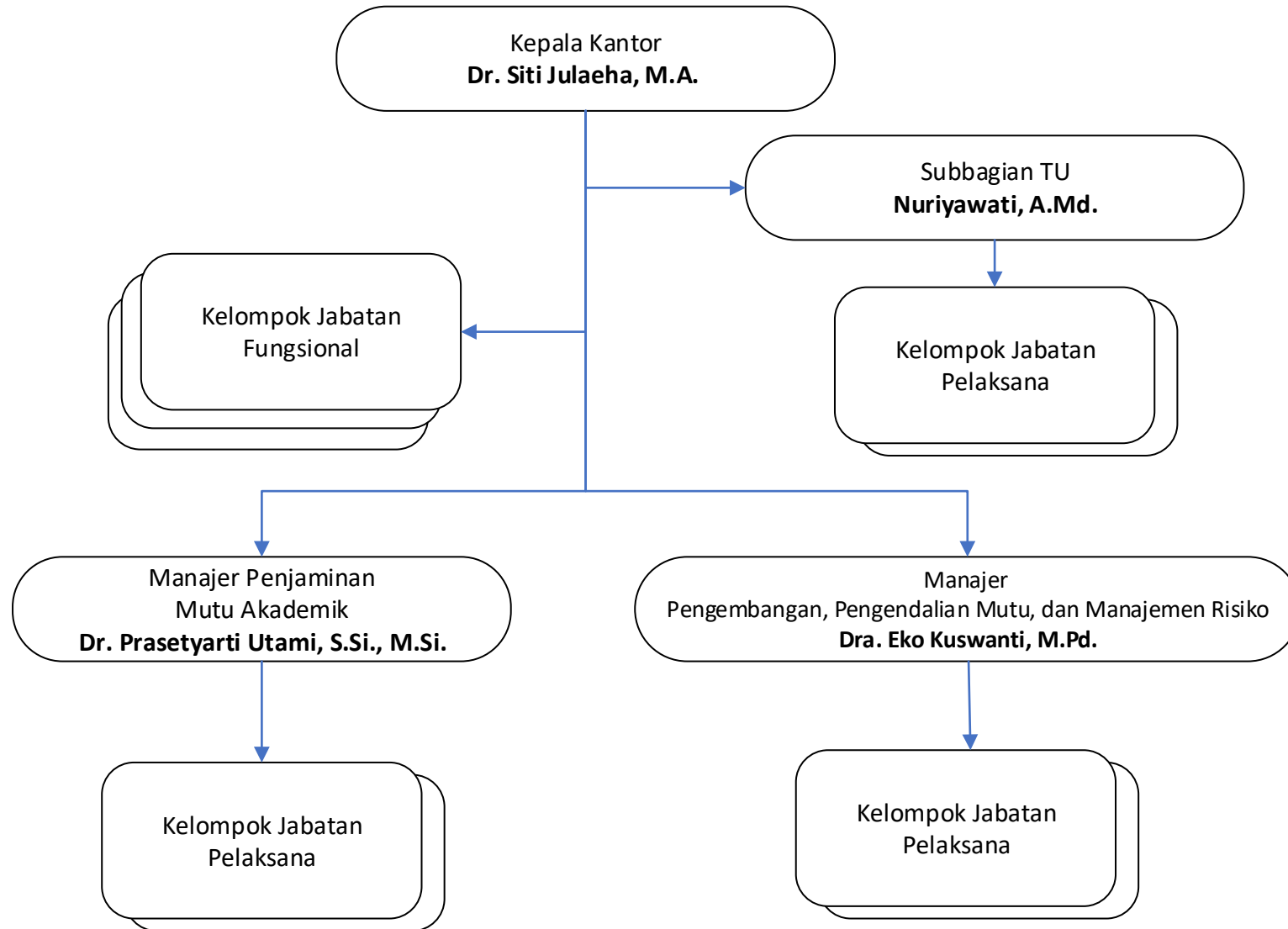
PUSAT PERPUSTAKAAN DAN KEARSIPAN (PPK)



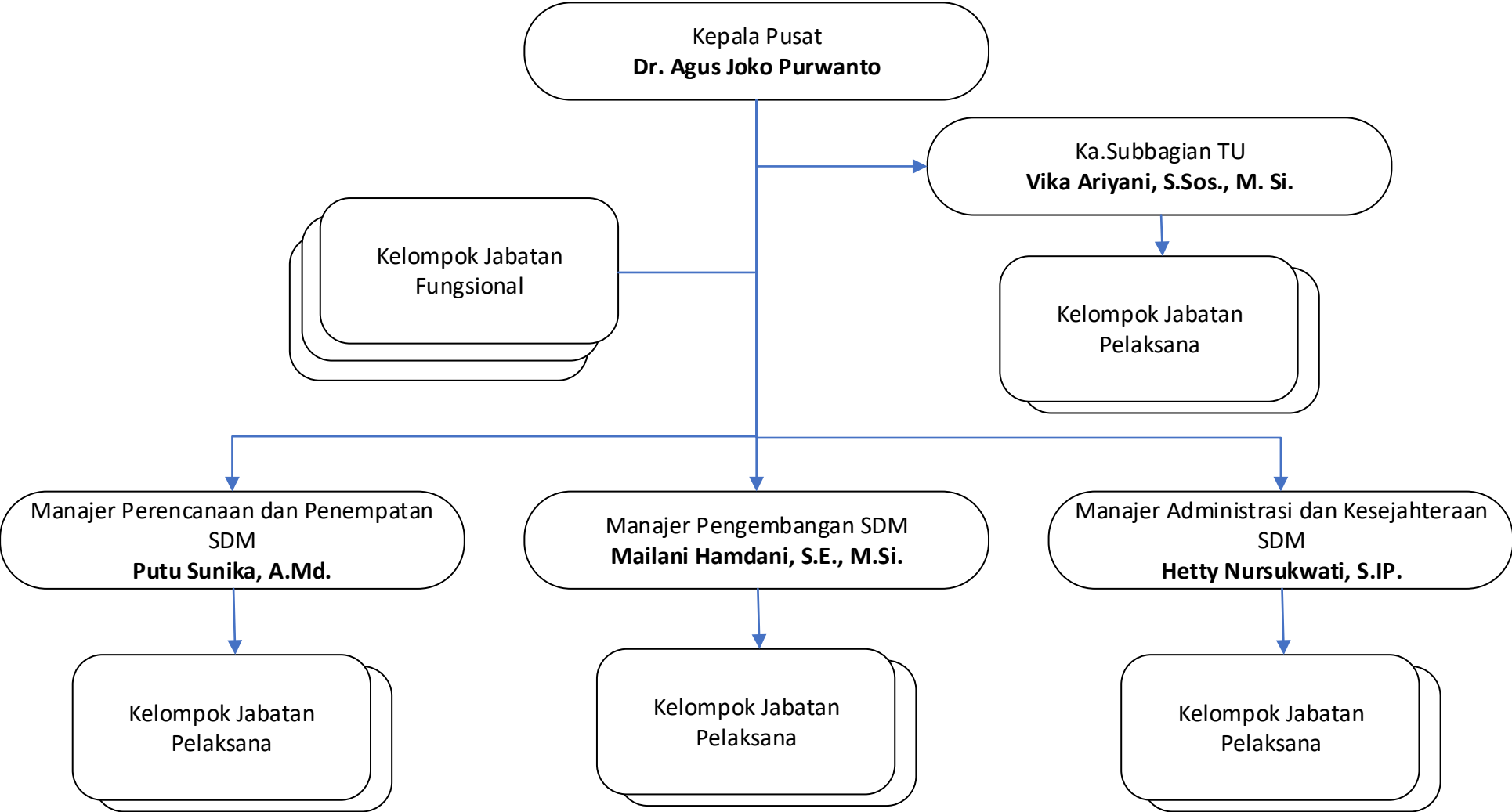
DIREKTORAT SISTEM INFORMASI (DISINFO)



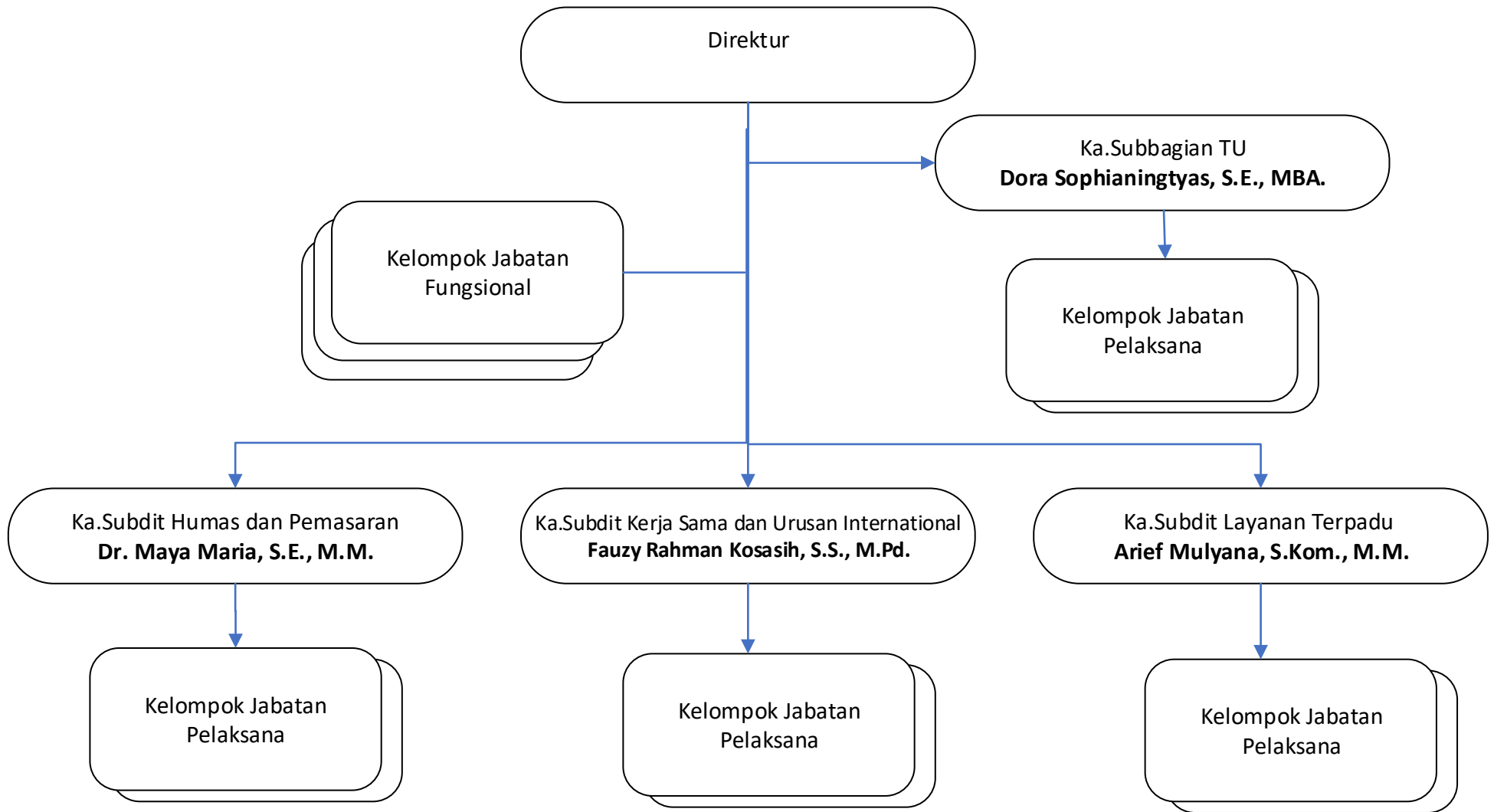
KANTOR PENJAMIN MUTU (KPM)



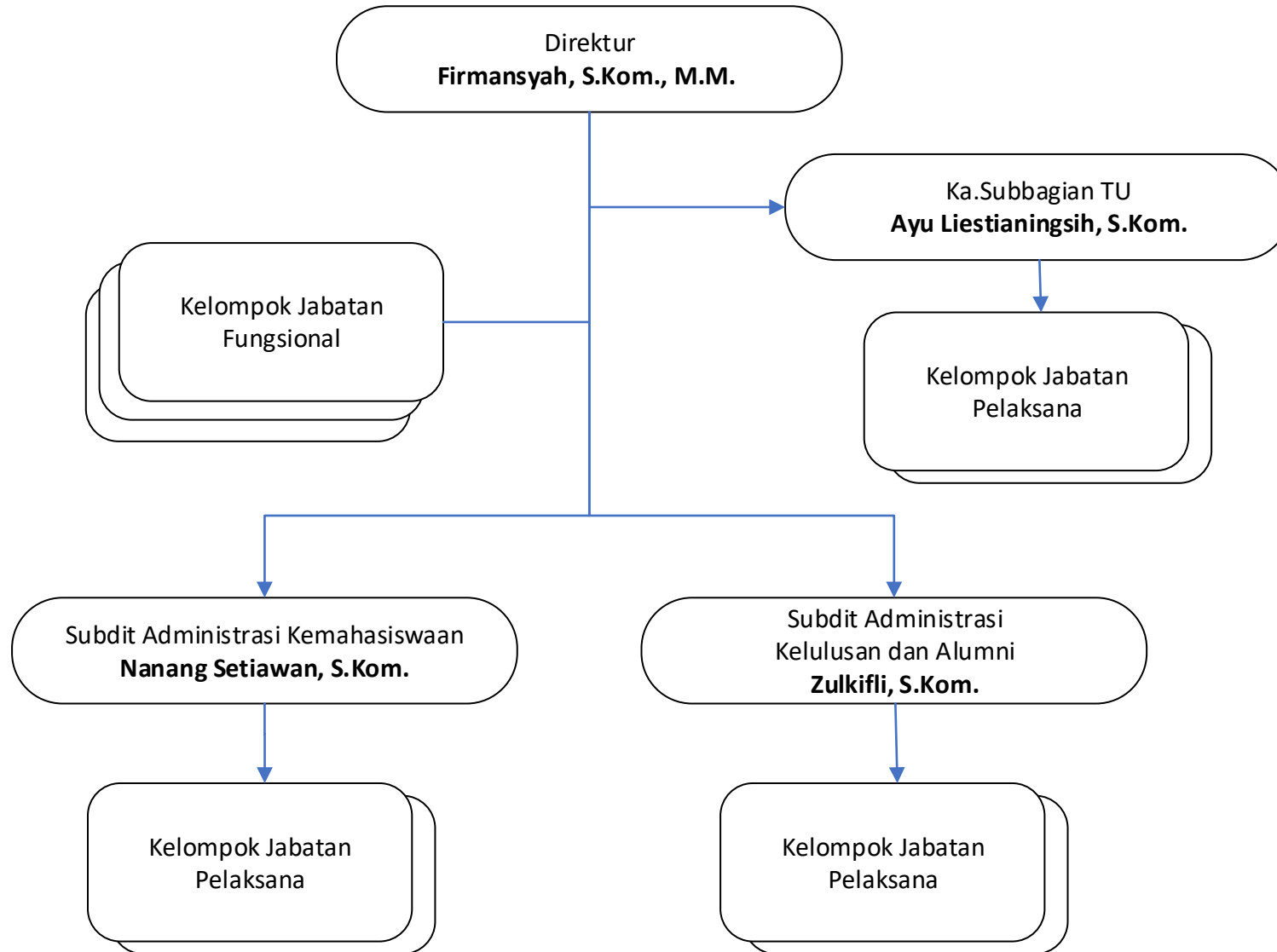
PUSAT SUMBER DAYA MANUSIA (PPSDM)



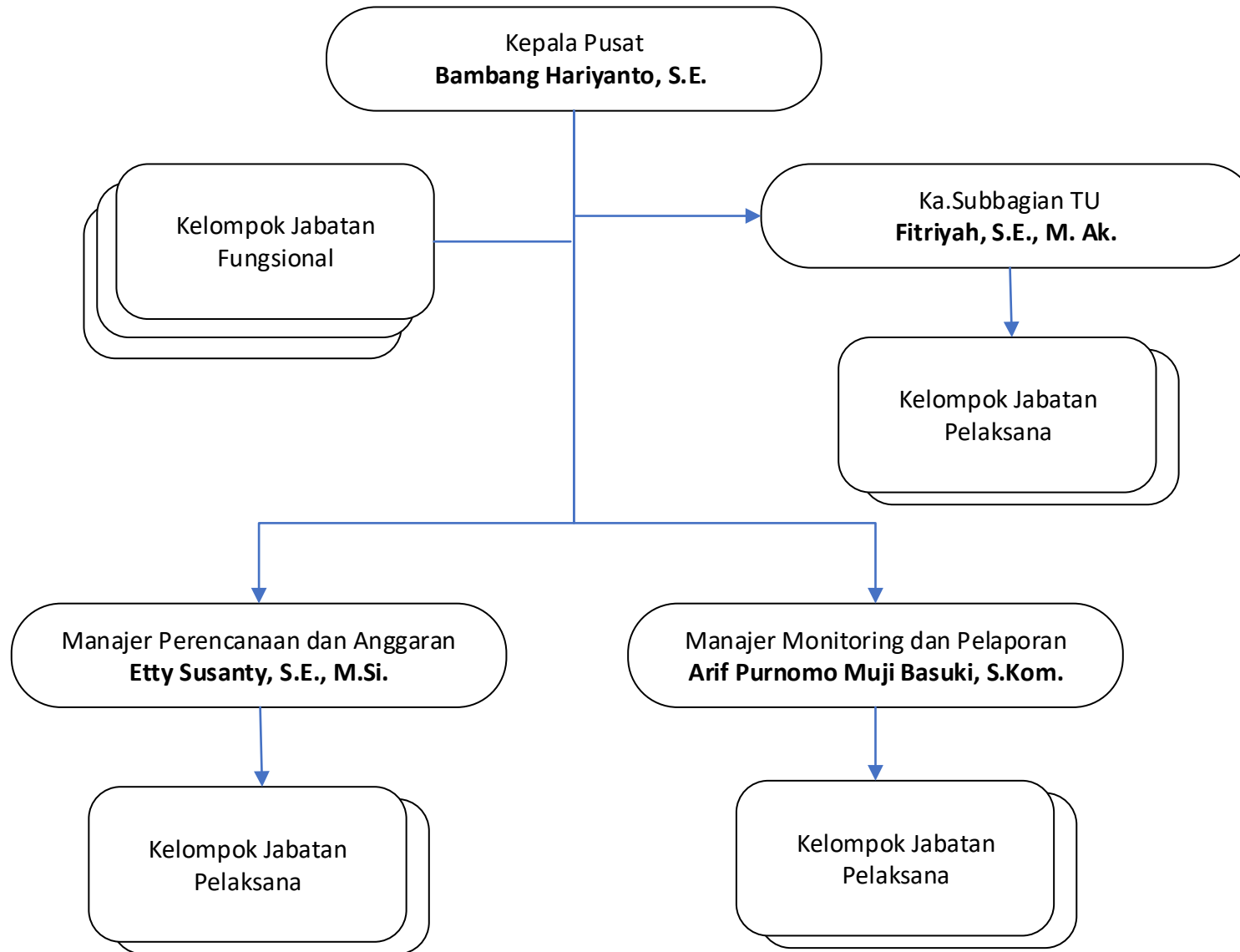
DIREKTORAT PEMASARAN DAN KERJASAMA (DPKS)



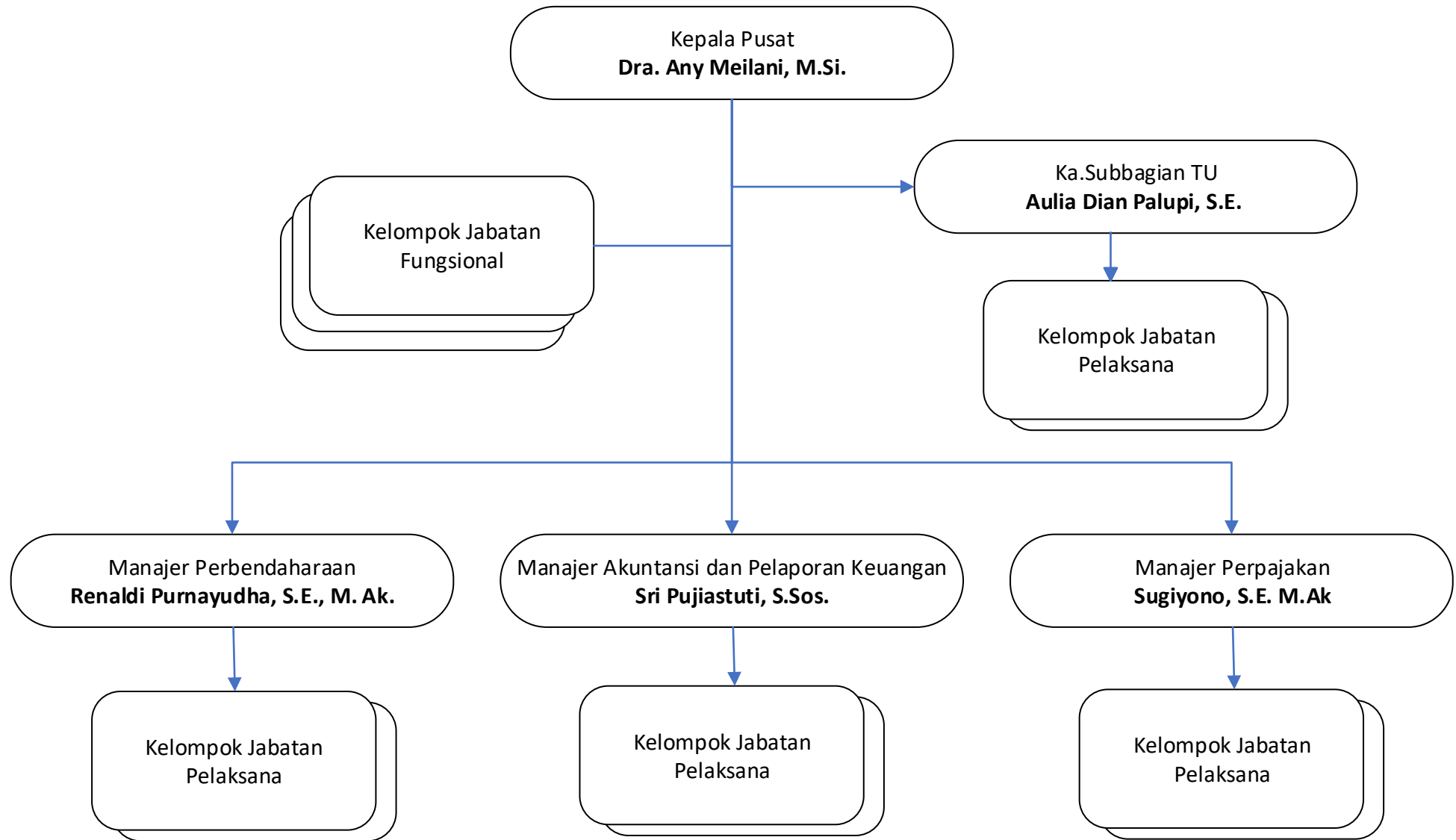
DIREKTORAT ADMINISTRASI AKADEMIK, KEMAHASISWAAN DAN KELULUSAN (DAAK)



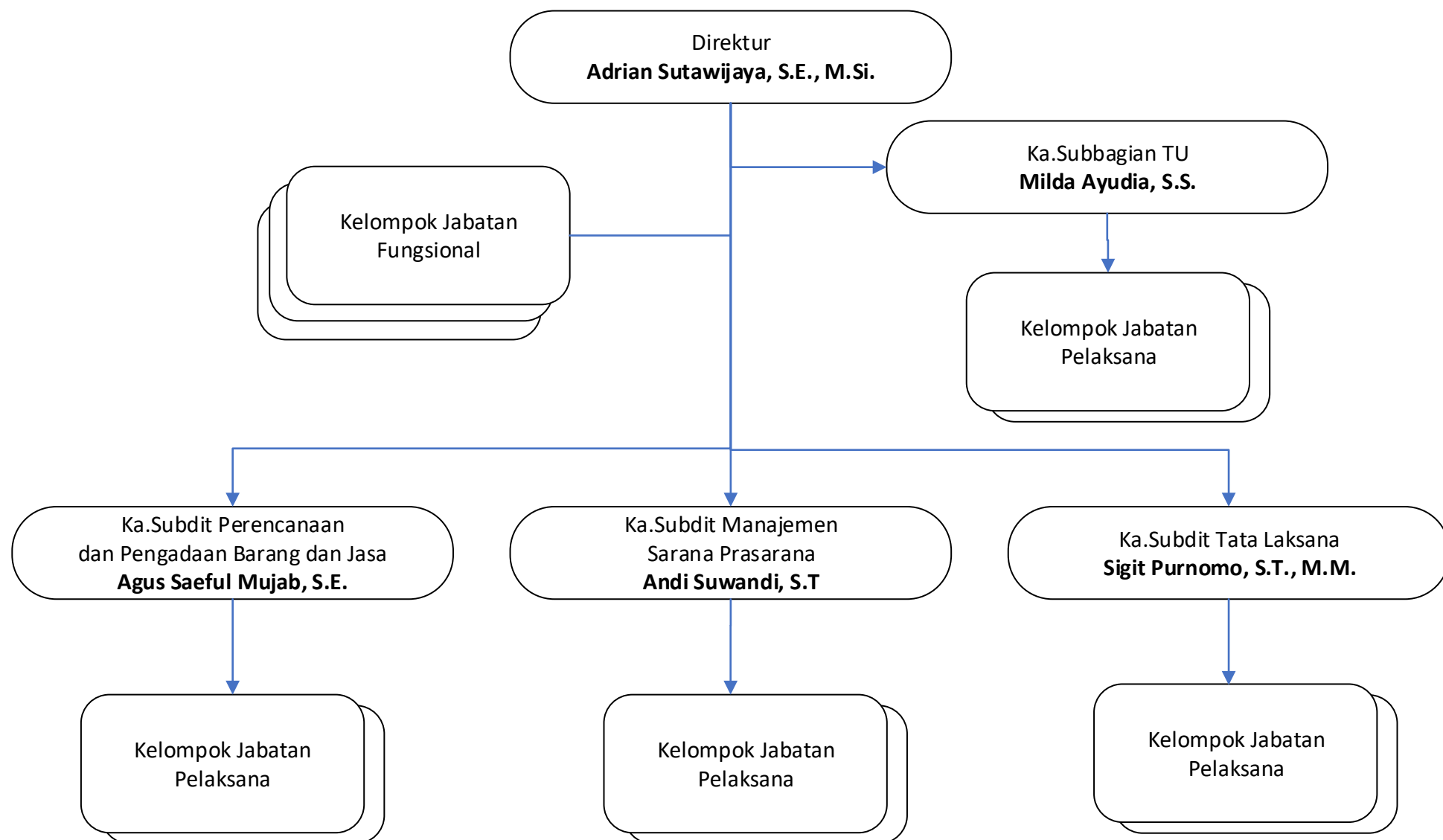
PUSAT PERENCANAAN DAN PELAPORAN (PUSRENPOR)



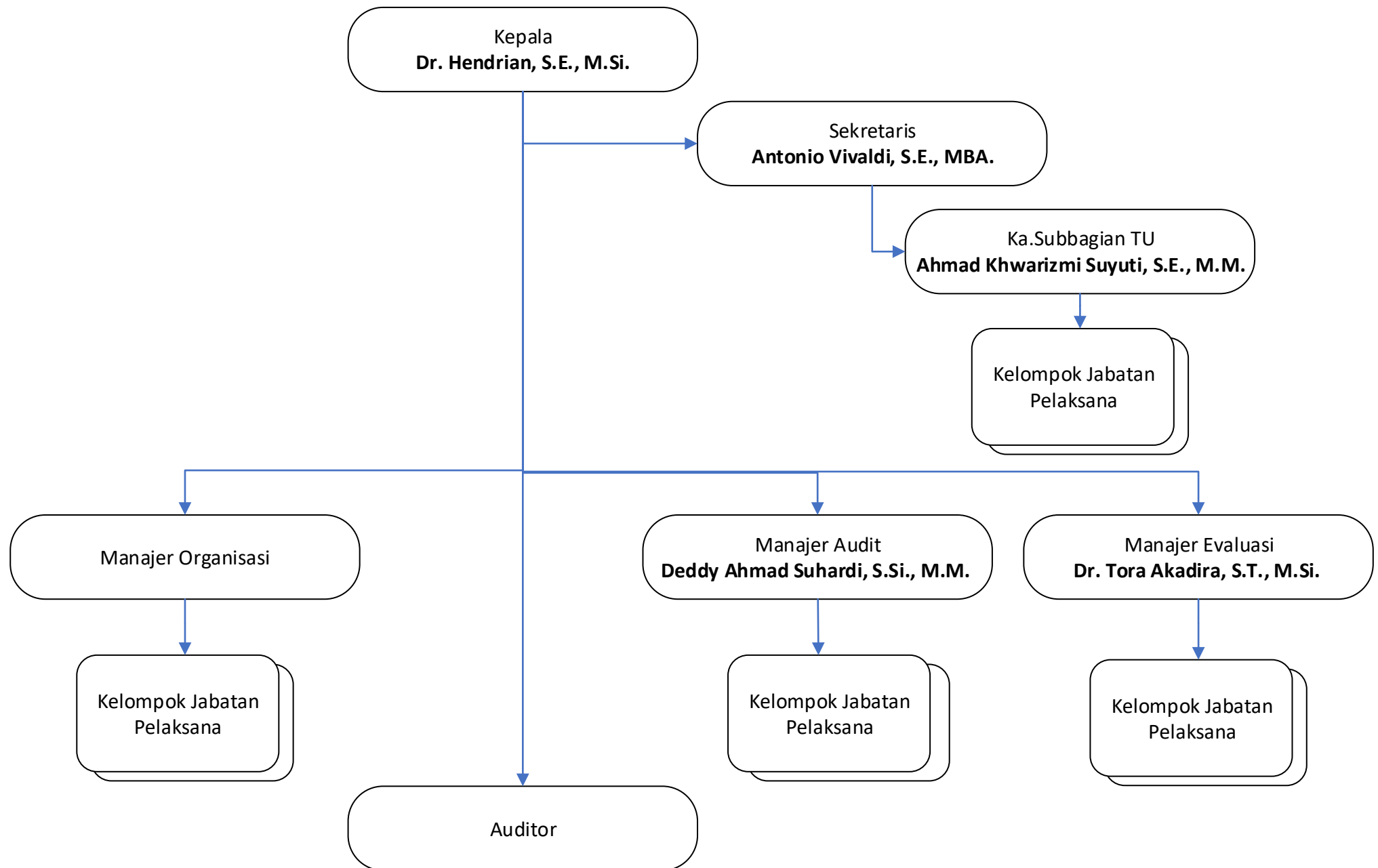
PUSAT PENGELOLAAN DAN KEUANGAN (PUSLAKEU)



DIREKTORAT MANAJEMEN SARANA PRASARANA DAN UMUM (DMAU)



KANTOR PENGAWAS INTERNAL (KPI)



PUSAT PENGELOLAAN BISNIS DAN INVESTASI (PPBI)

